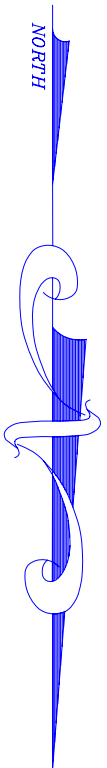
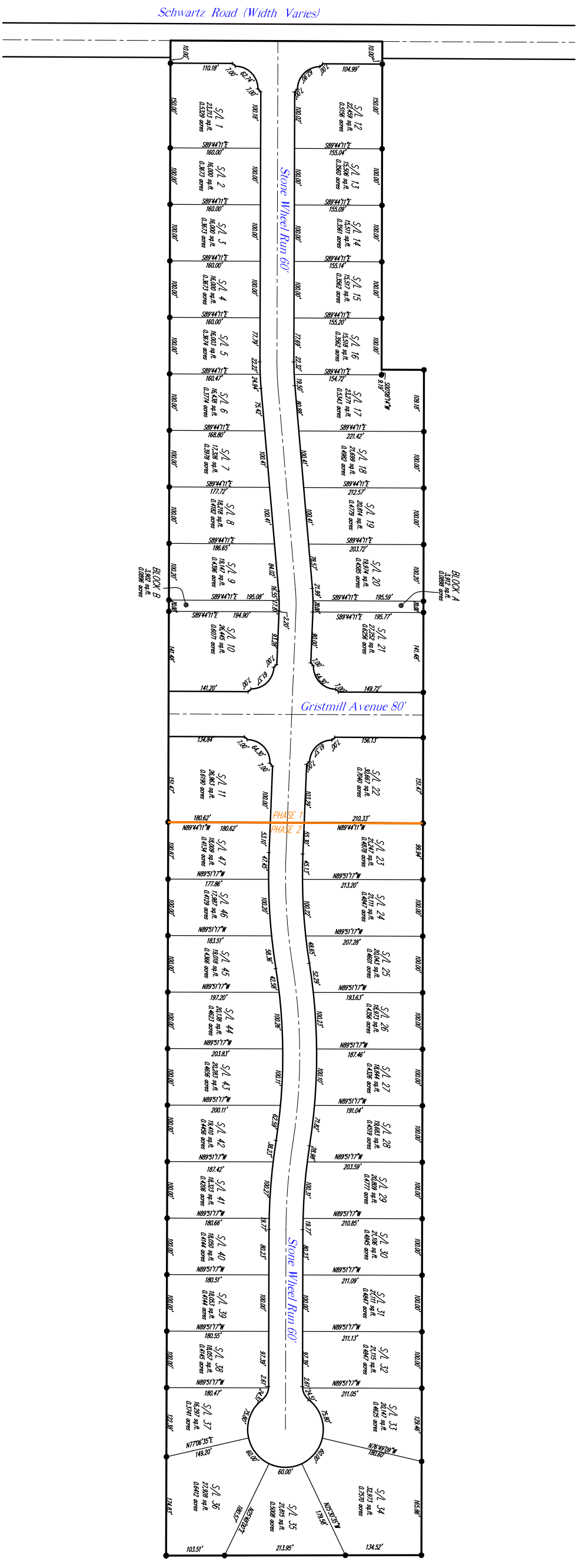




PREPARED BY:

GARLAND GRIFFIN HOMES
 PROUDLY PRESENTS:
STONE WHEEL RUN
 SUBDIVISIONS NO. 1 & 2
 A NEW SINGLE FAMILY COMMUNITY
 IN THE
 CITY OF AVON - LORAIN COUNTY

CONTACT:
 GARLAND GRIFFIN HOMES
 905 C Canterbury Road, Suite C
 Westlake, Ohio 44145
 Phone: (440) 892-4663
 Fax: (440) 892-4696



SCALE: 1"=200'